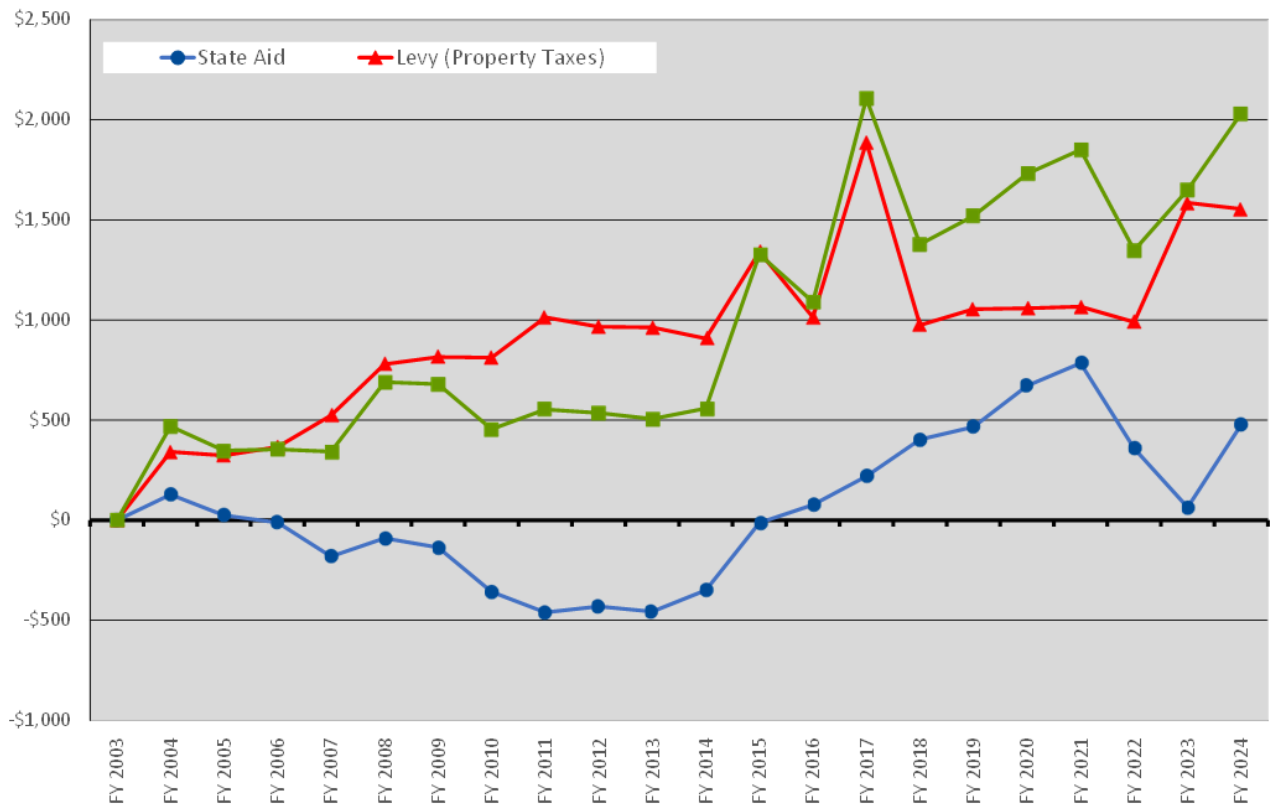


# New London-Spicer School District - Change in Revenue per Student (ADM)



Adjusted for Inflation (All Amounts in Constant FY2003 Dollars) - Consumer Price Index (CPI)

State Aid and Levy Equals Total Revenue



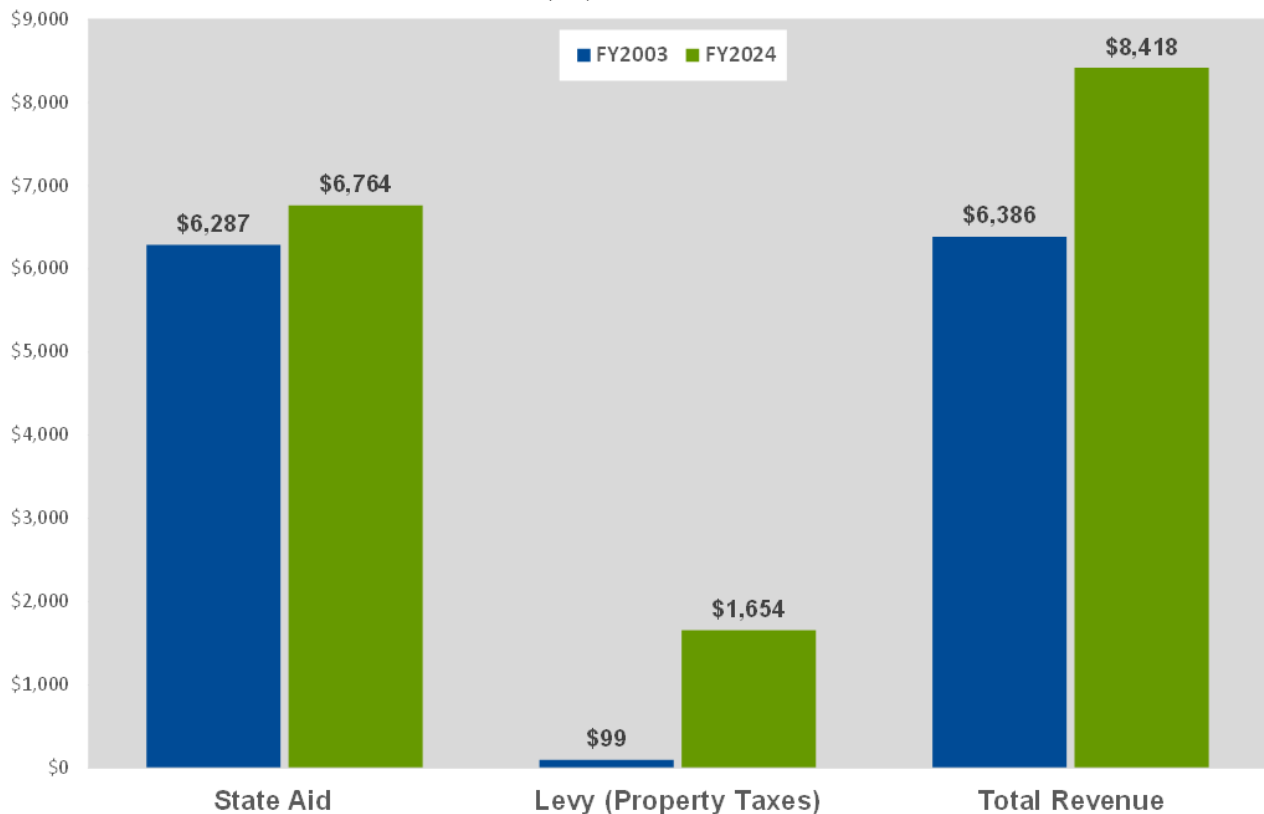
[schoolsforequity.org](http://schoolsforequity.org)

# New London-Spicer School District Revenue per Student (ADM)



State Aid and Levy Equals Total Revenue

All Amounts in Constant FY2003 Dollars - Consumer Price Index (CPI)



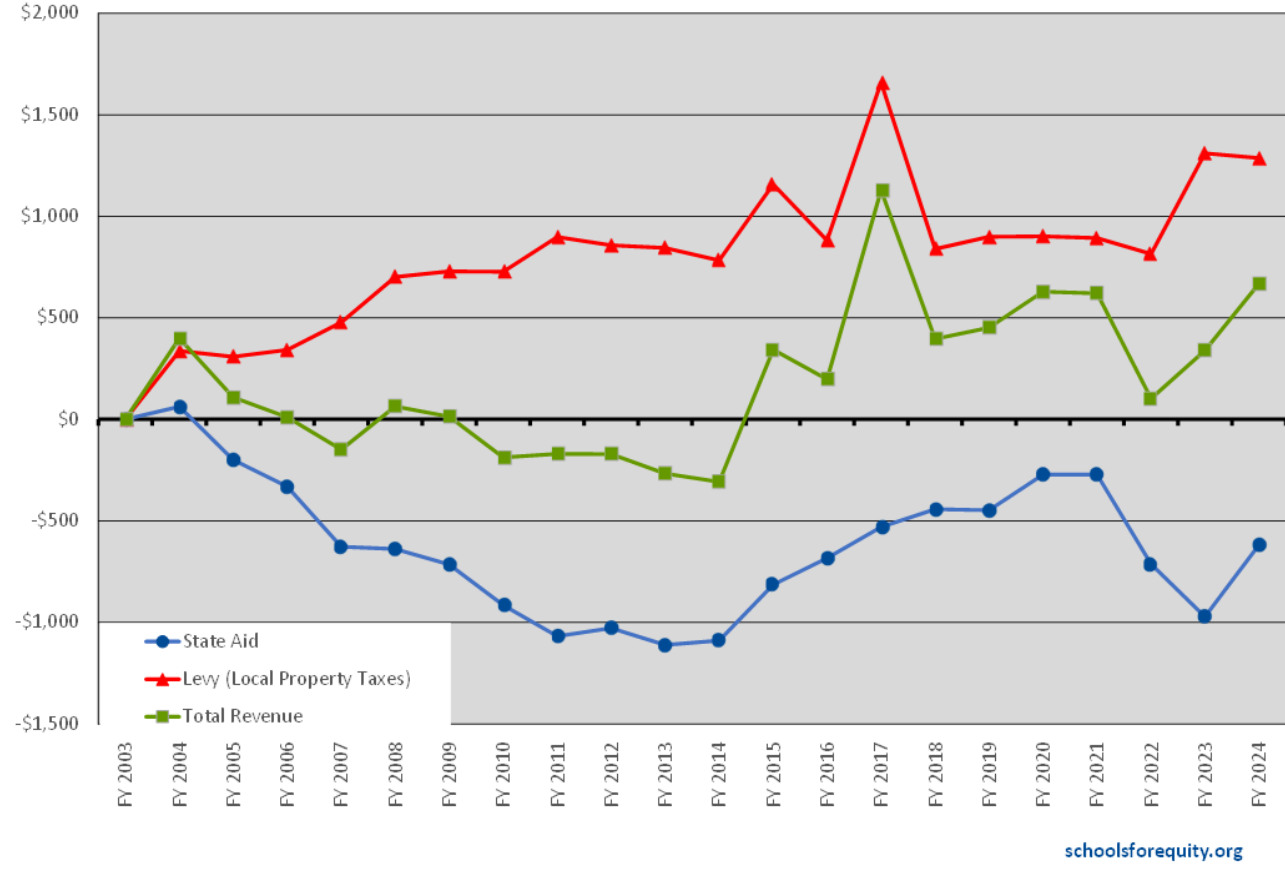
[schoolsforequity.org](http://schoolsforequity.org)

# New London-Spicer School District - Change in Revenue per Student (ADM)



Adjusted for Inflation (All Amounts in Constant FY2003 Dollars) - Implicit Price Deflator (IPD)

State Aid and Levy Equals Total Revenue



# New London-Spicer School District Revenue per Student (ADM)



State Aid and Levy Equals Total Revenue

All Amounts in Constant FY2003 Dollars - Implicit Price Deflator (IPD)

