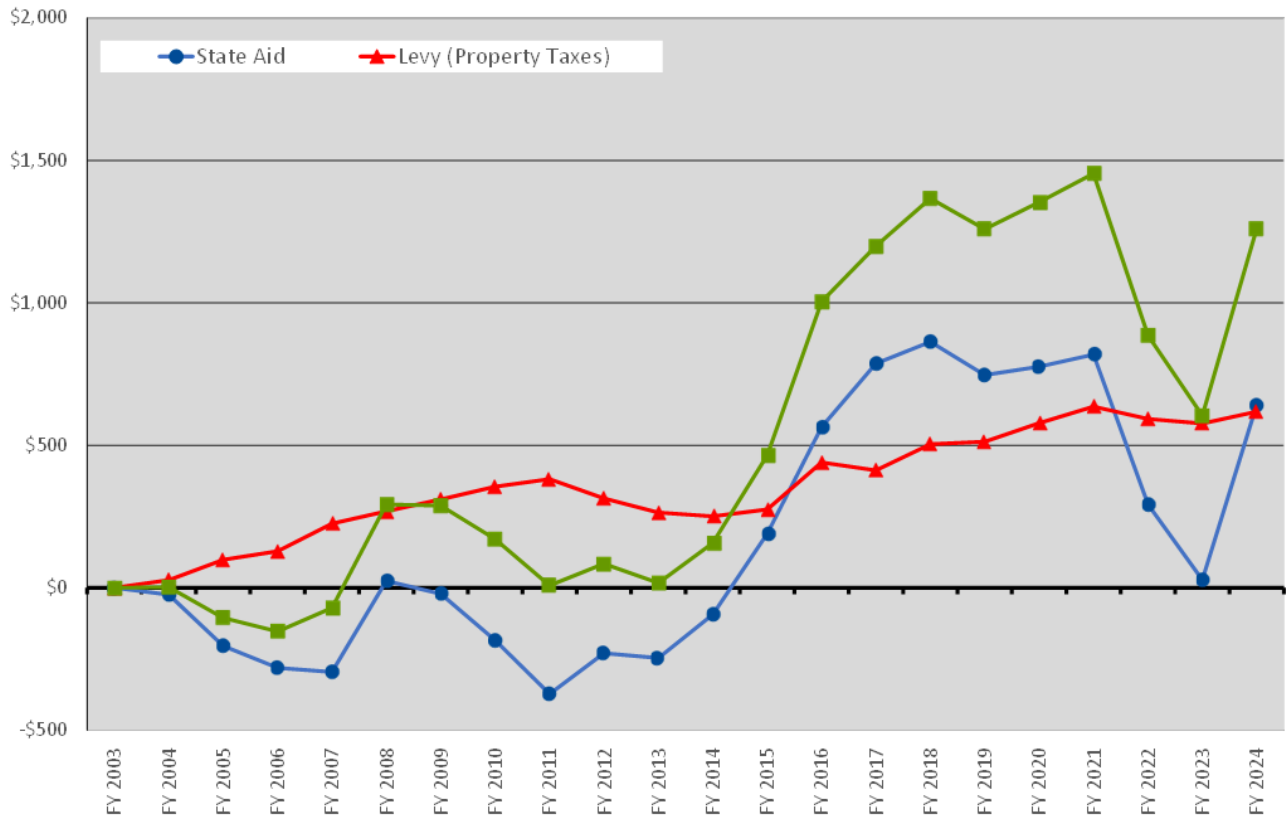


Mora School District - Change in Revenue per Student (ADM)



Adjusted for Inflation (All Amounts in Constant FY2003 Dollars) - Consumer Price Index (CPI)

State Aid and Levy Equals Total Revenue



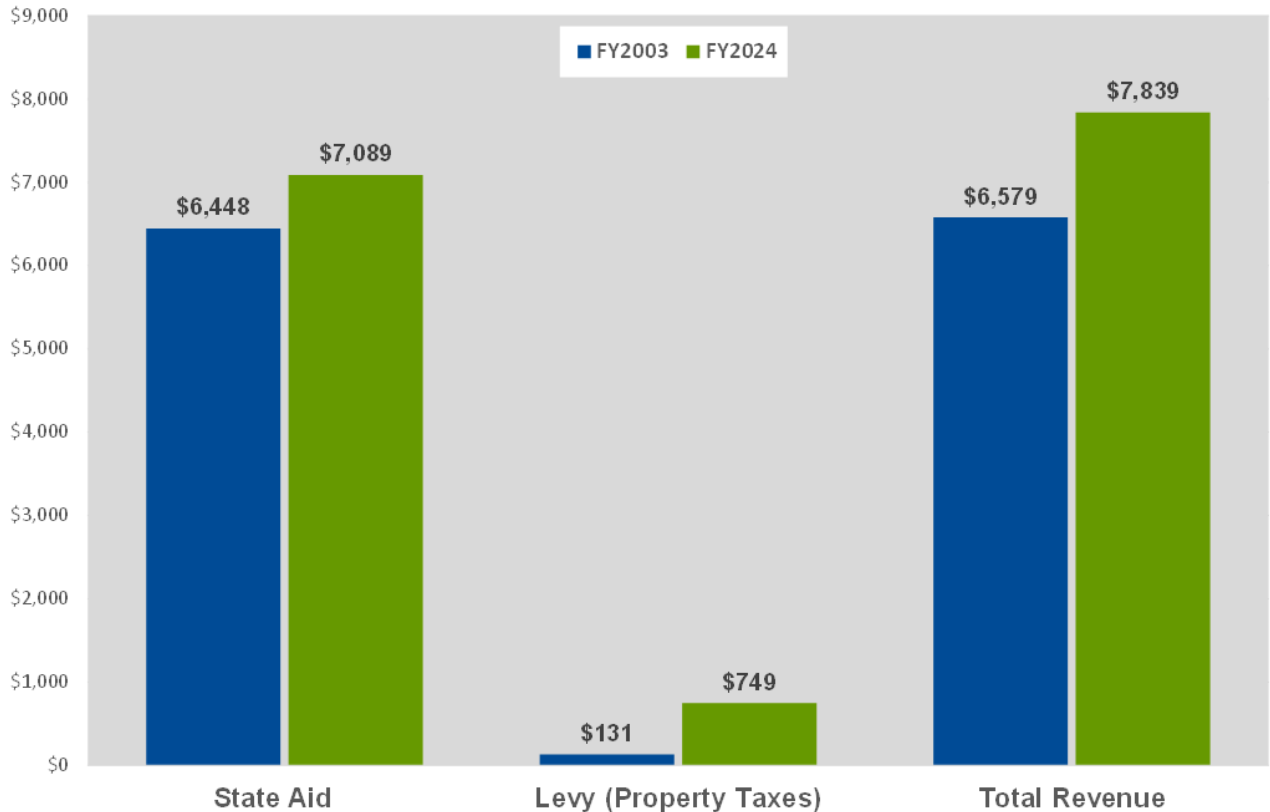
schoolsforequity.org

Mora School District Revenue per Student (ADM)



State Aid and Levy Equals Total Revenue

All Amounts in Constant FY2003 Dollars - Consumer Price Index (CPI)



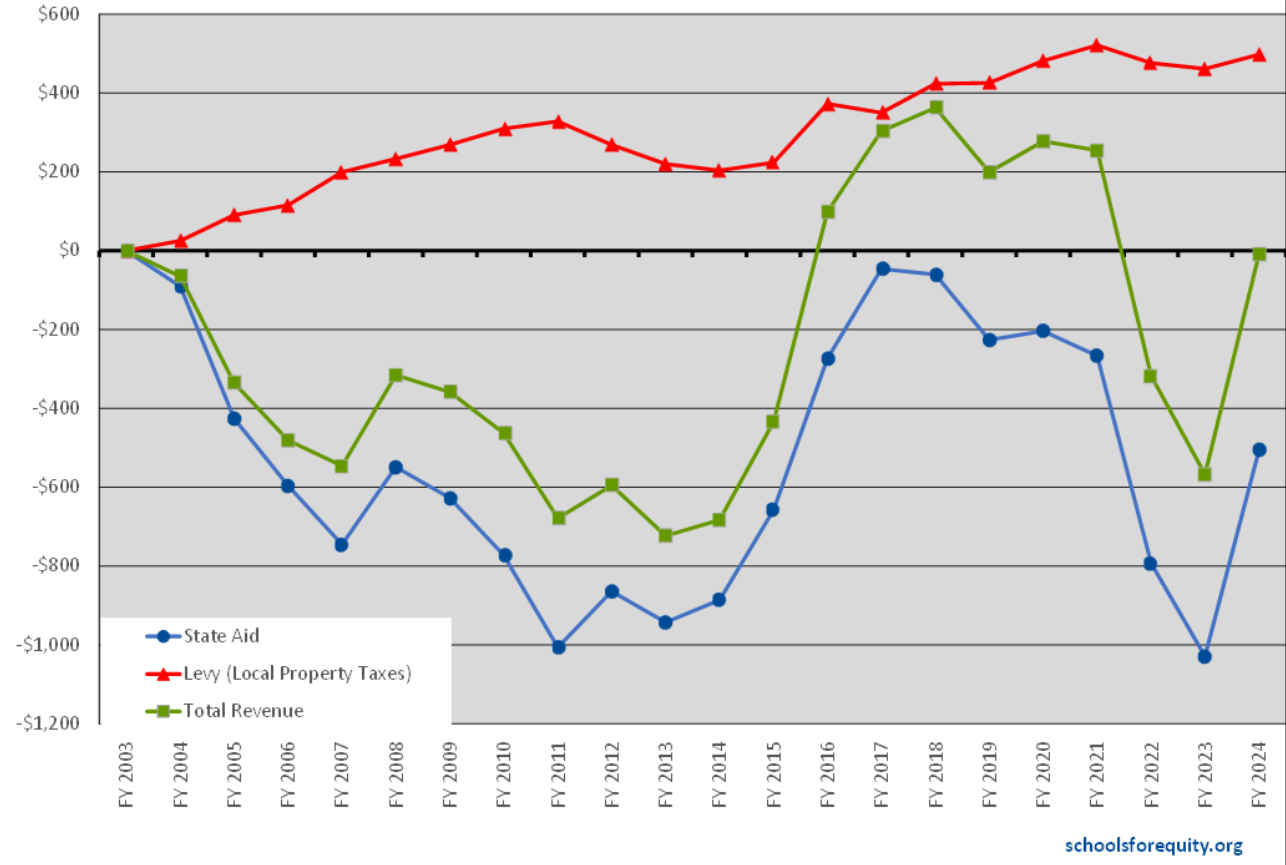
schoolsforequity.org

Mora School District - Change in Revenue per Student (ADM)



Adjusted for Inflation (All Amounts in Constant FY2003 Dollars) - Implicit Price Deflator (IPD)

State Aid and Levy Equals Total Revenue



Mora School District Revenue per Student (ADM)



State Aid and Levy Equals Total Revenue

All Amounts in Constant FY2003 Dollars - Implicit Price Deflator (IPD)

