

Votes
Volatility
Variables



Election 24





It's been a long few years...



All politics is local. – Tip O’Neal

**”I just don’t want my President
to be old and crazy.”**

**Suburban
Independent
Pro-Choice
Fiscal Moderate
Woman**



There's never just one thing...



The 2023 Takeaways

- All Politics is Local
 - Shift Left of Minneapolis / St. Paul City Council
 - Local Sales Taxes
 - Bloomington, Edina, St. Paul
 - School Board Races
 - External Spending
 - School Levy Trends
 - National Observations
 - Abortion



The 2023 Takeaways

Democracy is not a spectator sport.

- Low turnout
- Left and DSA – Who are they?
 - Faith in Minnesota
 - Take Action (Acorn)
 - DSA
- No Macro Issues





2024 Minnesota: 2024 Was Going to Be Boring



VERY Early 2024 Preview

An NPR-Marist poll found that 65% of voters don't want Biden to be president again; 60% feel the same about Trump.

2024 Legislative Issues

Bonding bill

- Partisan dynamics

Cannabis fixes

SRO Issue

Senate Caucus dynamics

Expectation of Progressives

Sports Betting

Teacher Pensions

Other issues?



Education as an issue

Loud and proud groups

Actual conversations vs. Extras

Back to the basics?

Flight students

School board politics vs accountability



There's never just one thing...



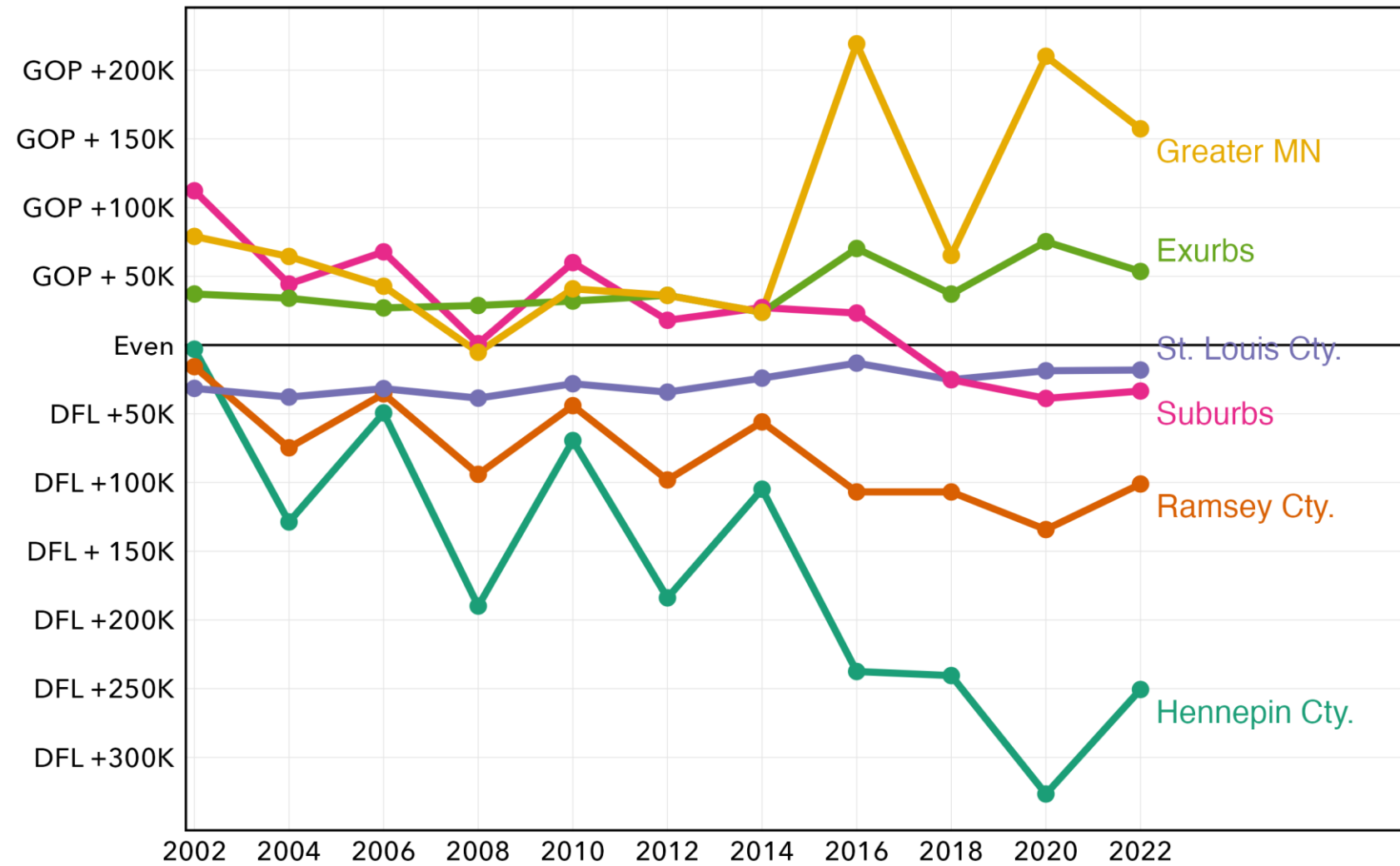
VERY Early 2024 Preview

- Economy / Inflation
- Abortion
 - Will DFLers put abortion on the ballot?
- War
- What else?

Turnout....

Electoral margins, 2002-2018

In presidential or gubernatorial race each year



Suburban counties are Anoka, Carver, Dakota, Scott and Washington. Exurban counties are Chisago, Isanti, Le Sueur, Mille Lacs, Sibley, Sherburne and Wright.

Source: MN Secretary of State. Morning Take graphic by David H. Montgomery.

All politics is local. – Tip O’Neal

The Major Battle – MN House

House DFL Majority by 70 to 64

House Freshman: 43

3 to tie, 4 to control.

10-12 targeted races – Winona, St. Cloud, Iron Range, Exurbs



Election 22



2024 Federal Races

US Senate

Klobuchar – No Challenger

CD1

Finstad – Weak Challenger

CD2

Craig – Multiple Challengers

CD3

Phillips – Open Seat (Morrison)

CD4

McCollum – Weak Challenger

CD5

Omar – Primary Challengers

CD6

Emmer – Safe

CD7

Fischbach - Safe

CD8

Stauber - Safe



DFLers winning margins for MNGOV

Ramsey County:

In 2010 by 22 points.

In 2014 by 31 points.

In 2018 by 43 points

In 2022 by 46 points

Hennepin County:

In 2010 by 13 points

In 2014 by 23 points

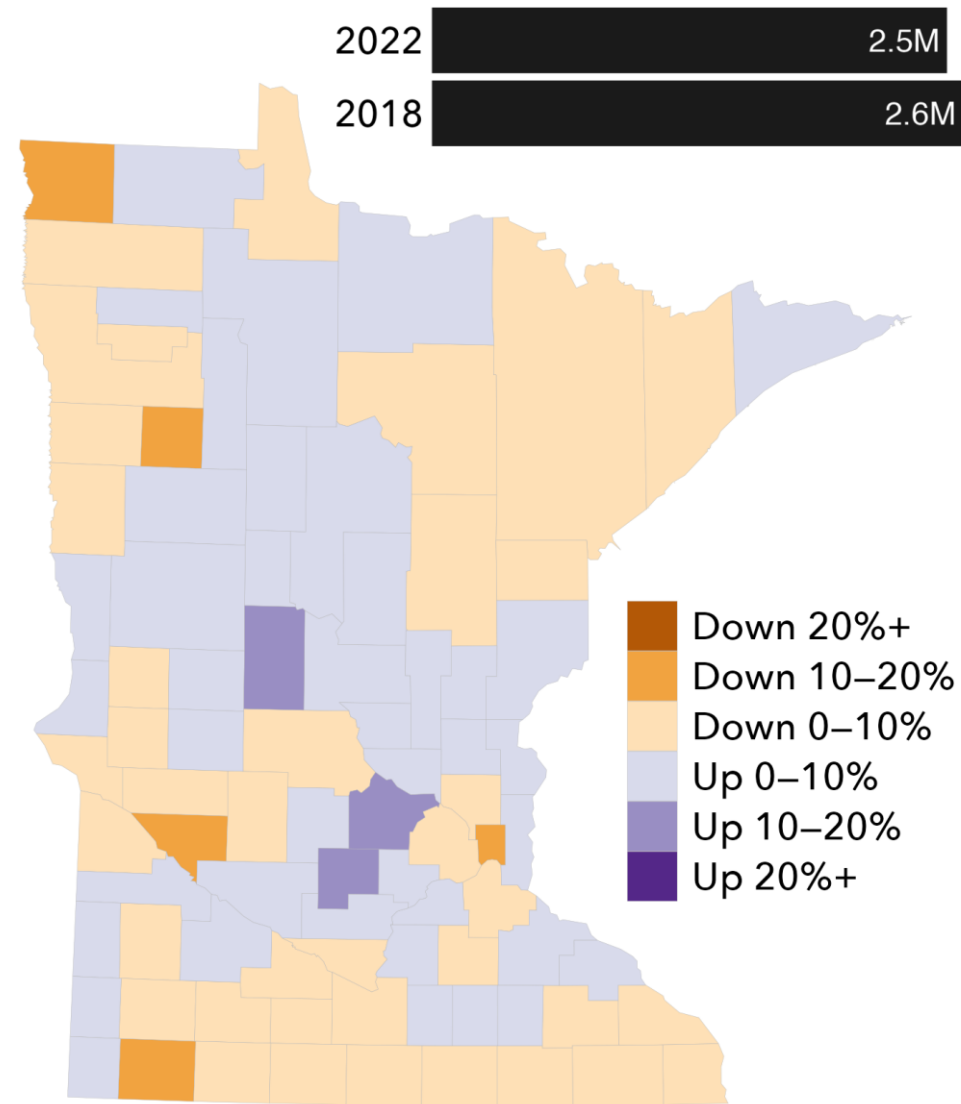
In 2018 by 38 points

In 2022 by 44 points

Why can't Republicans win statewide?



Turnout difference, 2018 vs. 2022



Election 24

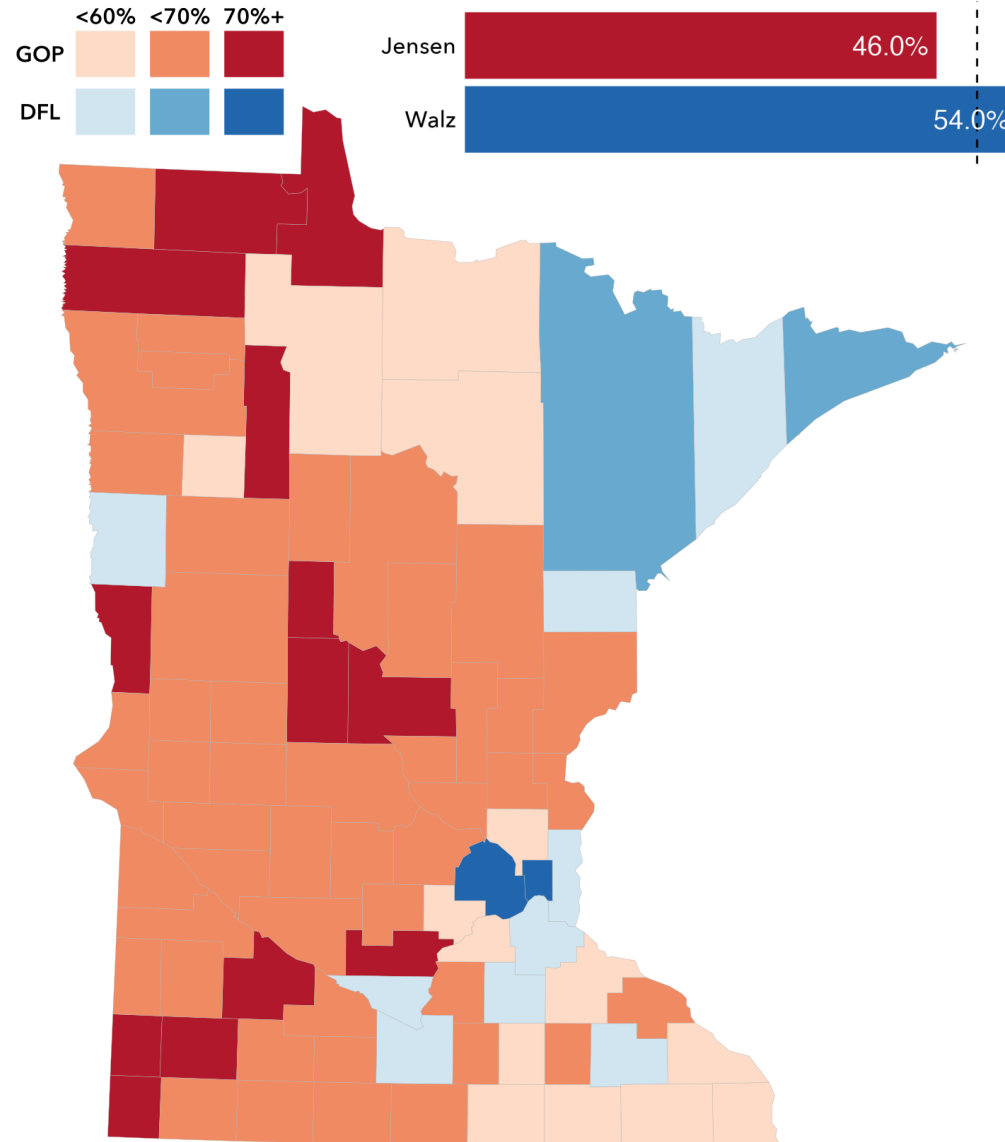
Source: Minnesota Secretary of State
Morning Take graphic by David H. Montgomery



morning take



2022 Governor result



Election 24

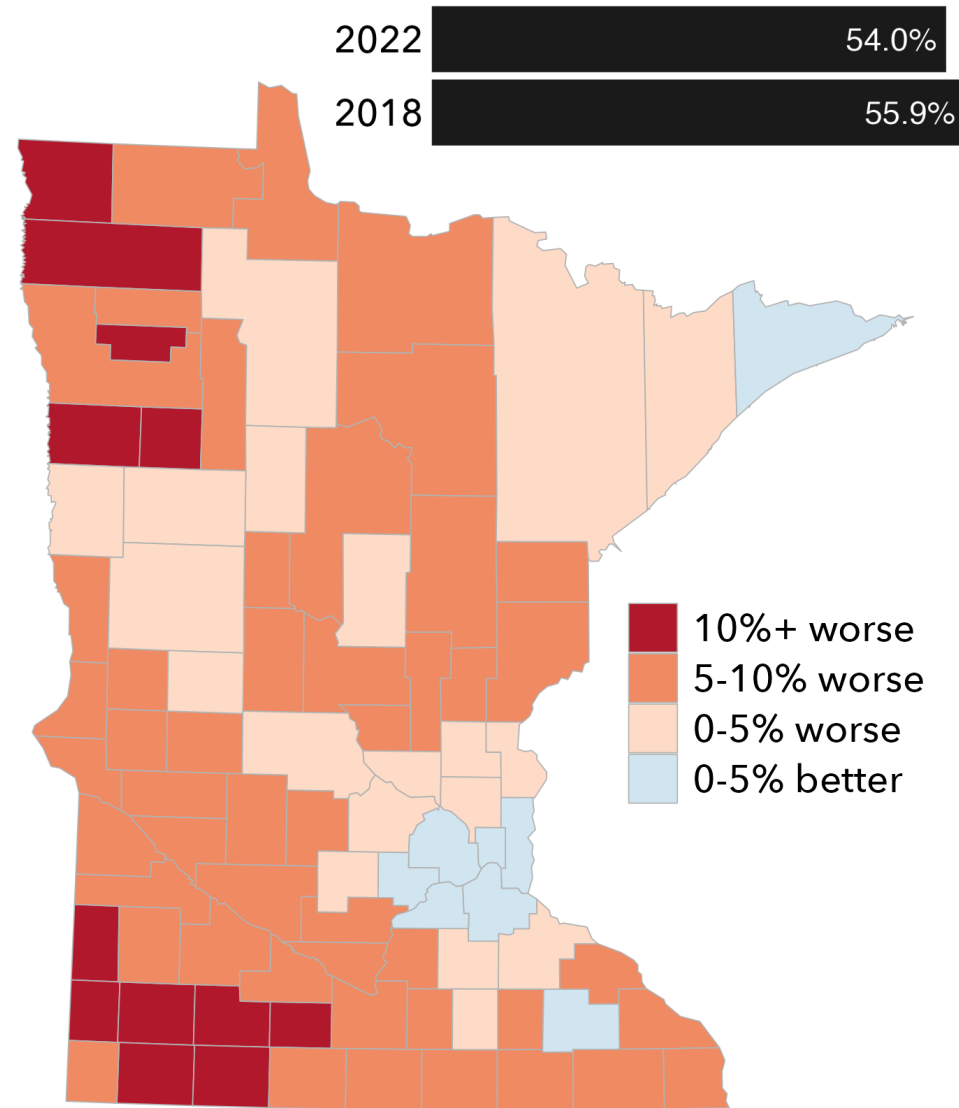
Source: Minnesota Secretary of State
Morning Take graphic by David H. Montgomery



morning take



Walz vote share, 2022 vs. 2018



Election 24

Source: Minnesota Secretary of State
Morning Take graphic by David H. Montgomery



morning take



What does it mean? Politics

Deeply damaged Republican party = Trump

Deeply divided state Greater MN vs. Metro

No clear Republican statewide strategy to win

DFLers have won the suburbs 3 elections in a row

DFL internal dynamics a challenge to navigate



**Questions, comments,
critiques...**



Election 24

Tip sheets:

www.fluence-newsletters.com

Radio:

9AM/PM Sundays – Sunday Take

6:20 M-Th – Morning Take

X: @bloisolson